

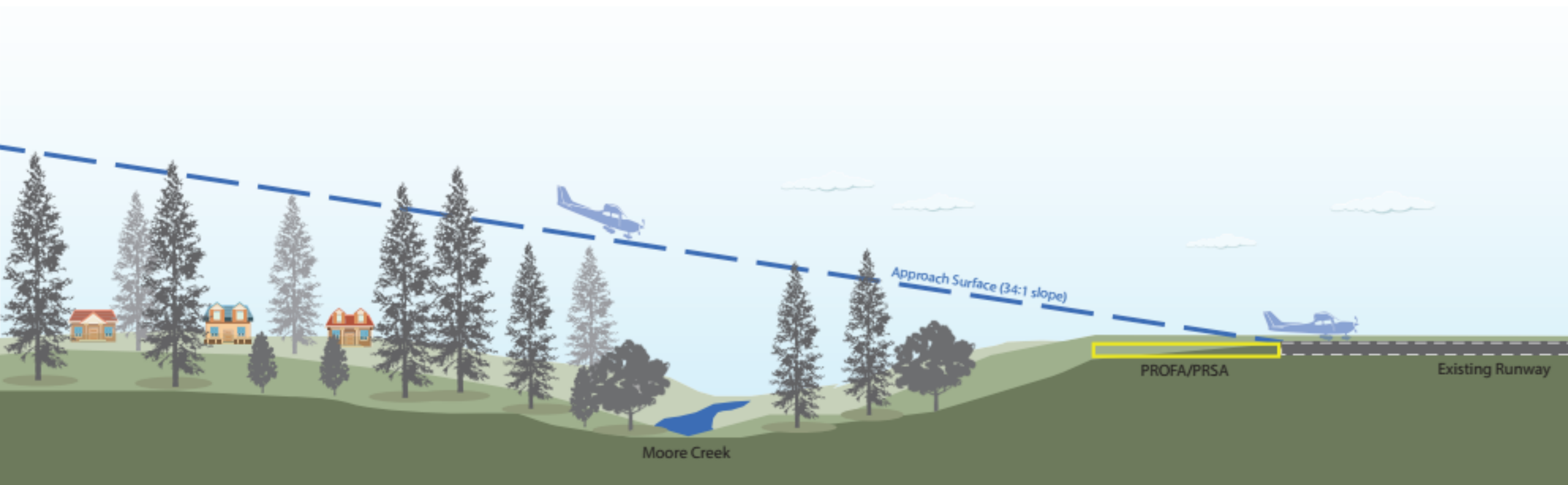
Newport Municipal Airport

Obstruction Removal Project

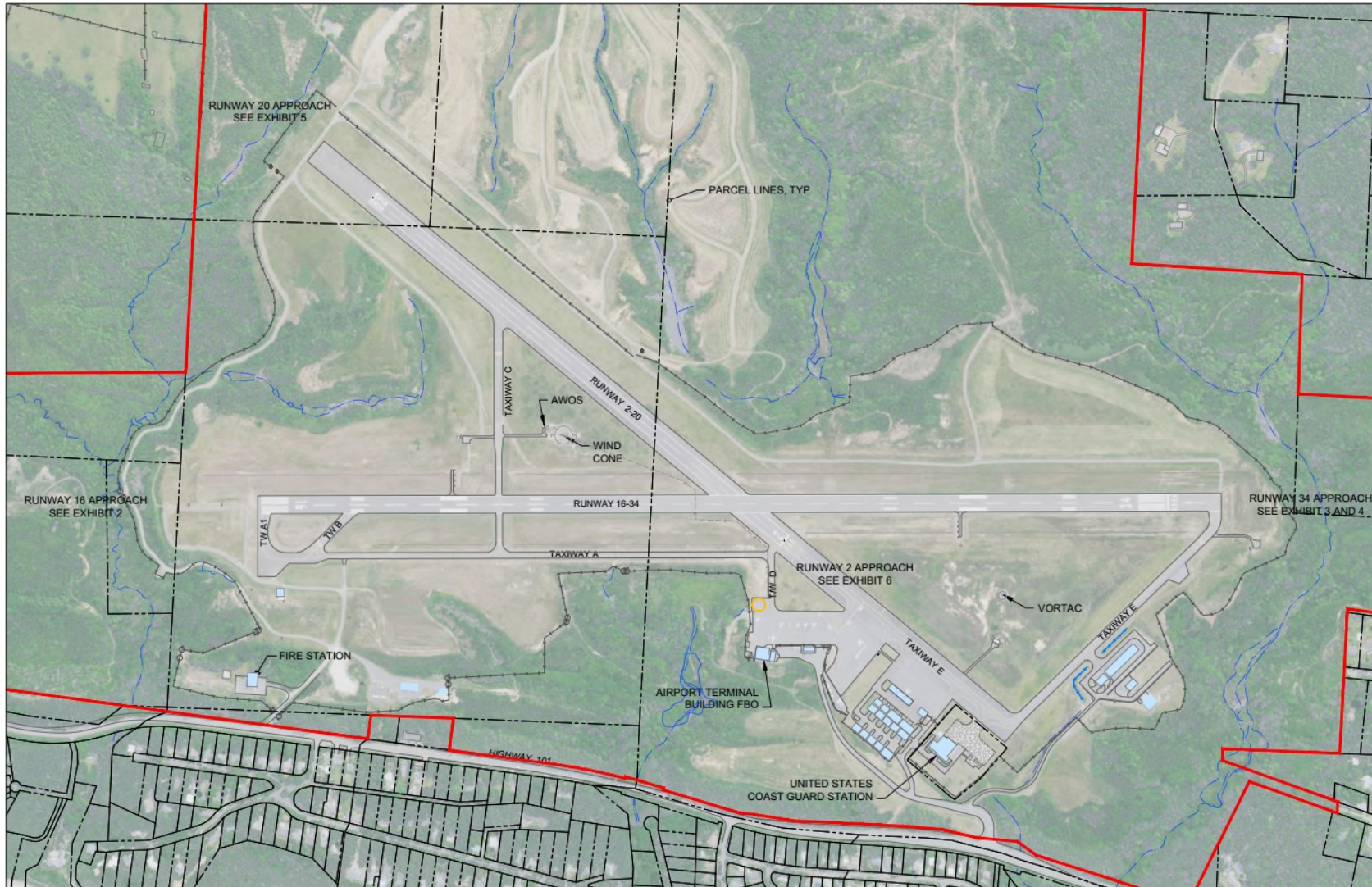
Newport Municipal Airport

- Spenser Nebel, City Manager
- Lance Vanderbeck, Airport Director
- Ilon Logan, FAA Environmental Protection Specialist
- Susan Cunningham, Environmental Science Associates

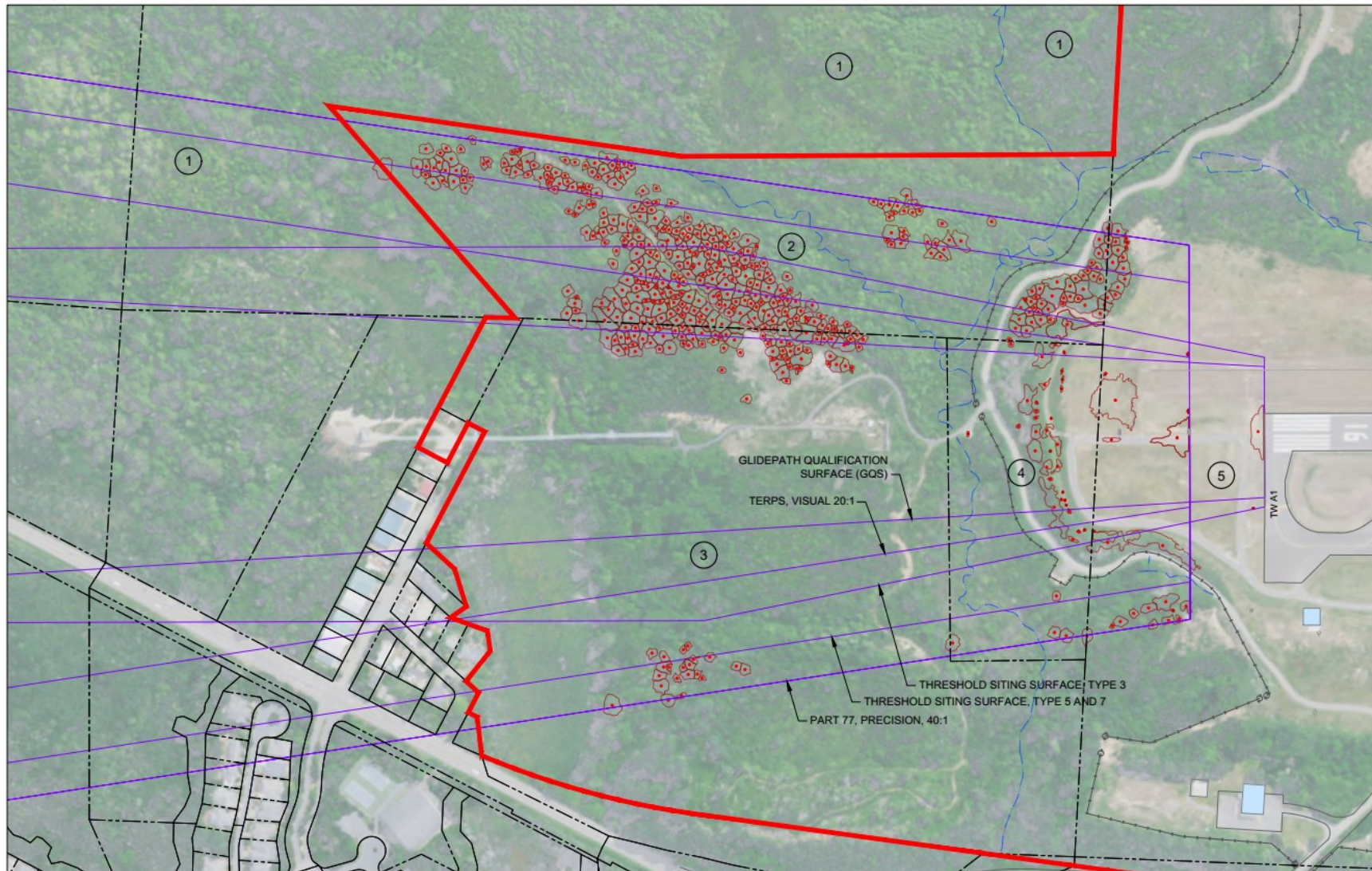
Obstructions in the approach surface



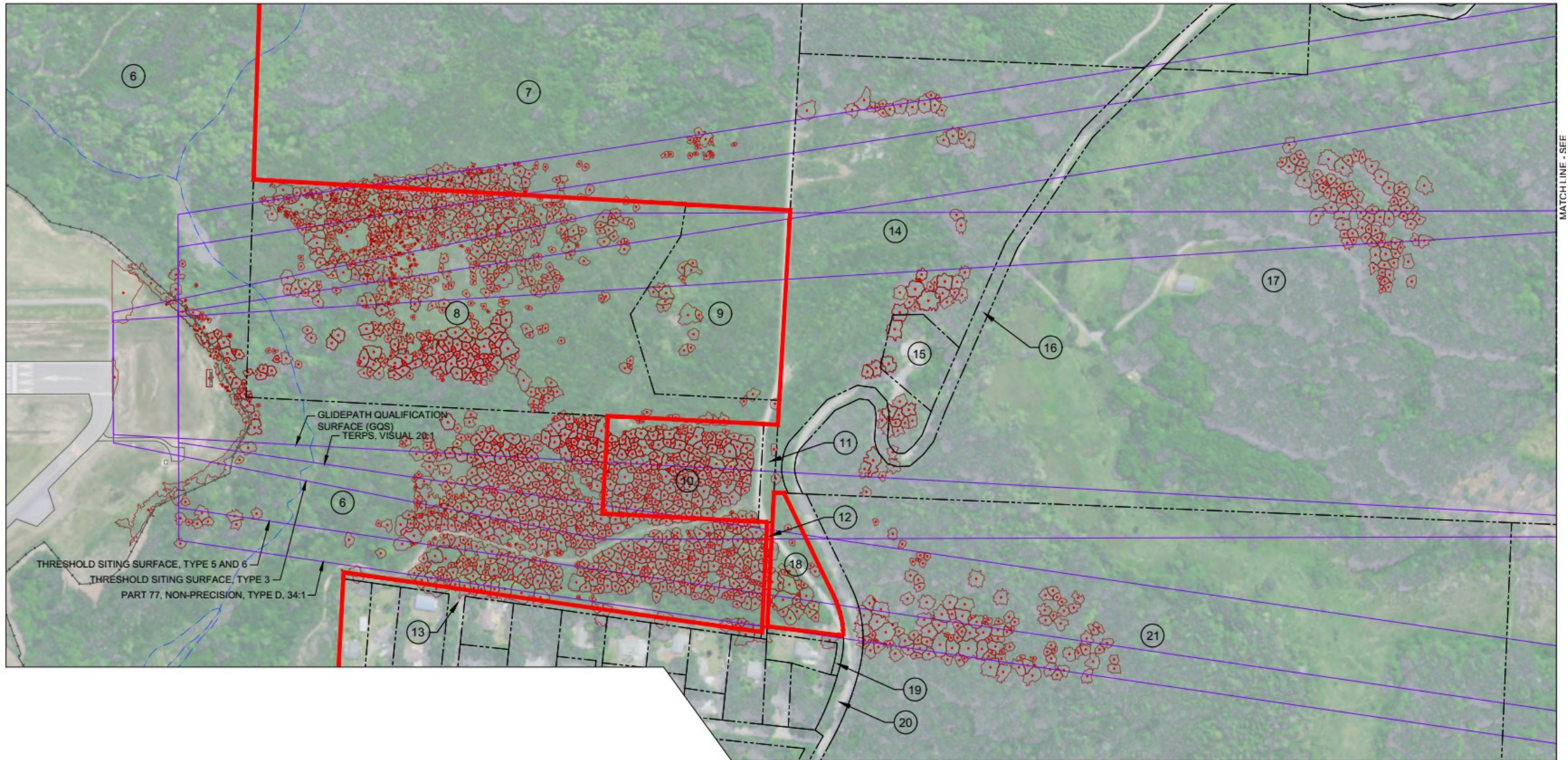
Newport Municipal Airport



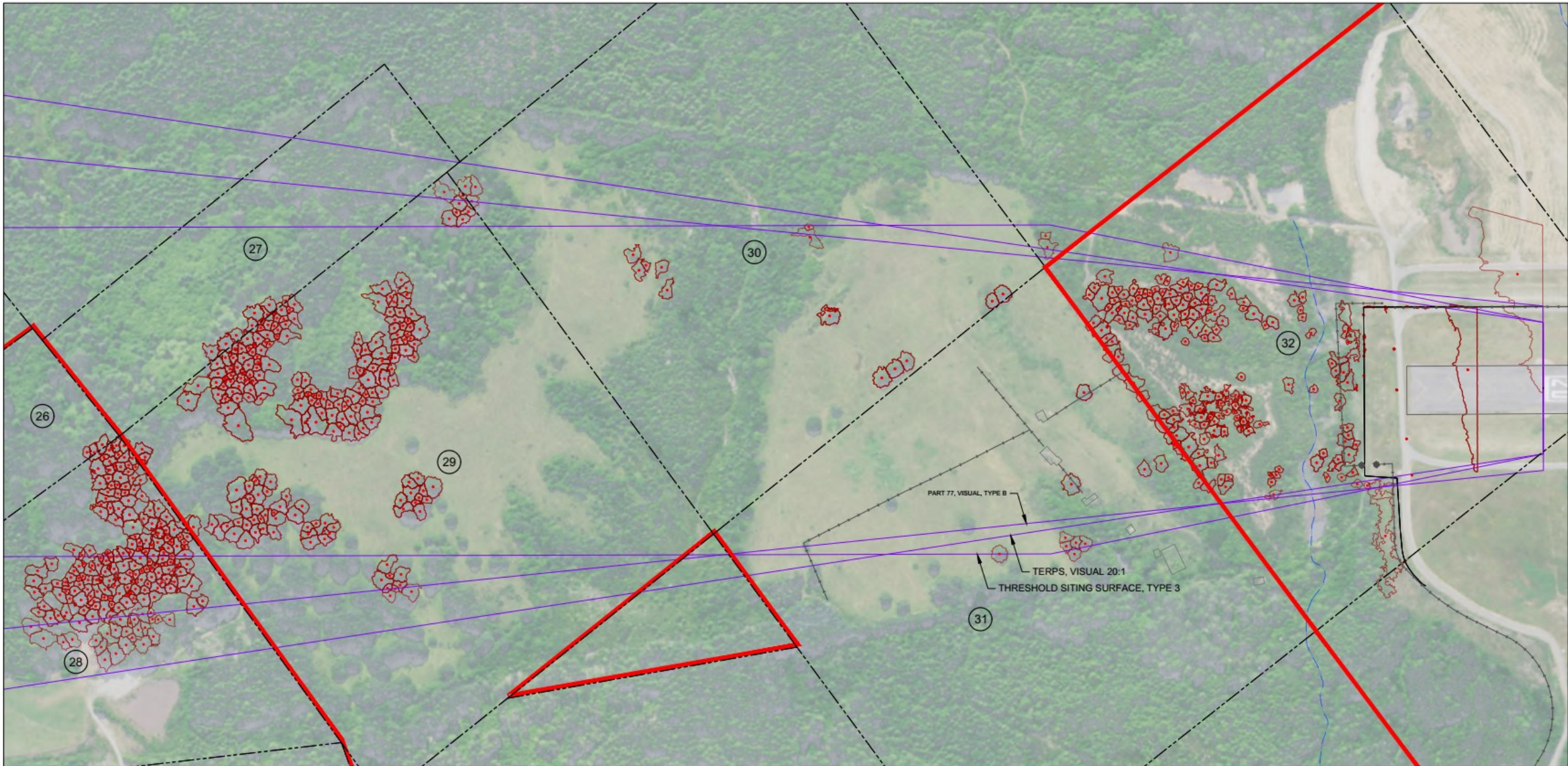
Runway 16 – Precision Instrument Approach



Runway end 34 – Non-precision Instrument Approach



Runway end 20 – Visual Approach



Send Comments To:

Lance Vanderbeck, Airport Director

Newport Municipal Airport

135 SE 84th St.

Newport, OR 97366

L.Vanderbeck@NewportOregon.gov

541-867-7422